

Advanced  
New Generation  
Document Management

**Aficio™ 2035e/2045e**



**RICOH**  
Image Communication

# Taking Care of your Every Demand

How smooth would your office workflow run if you could use a central office system taking care of all document production and management? Designed to do exactly this, the Aficio™2035e/2045e make sure you save time, money and space. These new generation office solutions provide highly advanced web based document management at the centre of your network. Opening up new possibilities for enhanced communication, paper- and server-less faxing, 'scan to e-mail' via LDAP and professional output finishing are but a few of their impressive capabilities. Their network connectivity is flexible, their document management and web based device monitoring are impressive. And of course... these user friendly multifunctional devices still include superb print, copy, fax and scan functionality! The Aficio™2035e/2045e are all-round office solutions.



# Professional Workflow Efficiency

The basis for a smooth office workflow? Office equipment that offers user friendly operation, straightforward printing, versatile finishing and optimal data management. Designed to streamline your workflow from beginning to end, the Aficio™2035e/2045e fit that description perfectly.



## Time Efficient Operation

The Aficio™2035e/2045e's large LCD touch screen intuitively guides you through all print, copy, fax and scan jobs. The panel is logically organised with a minimum number of steps leading to the required result in a more effective way.

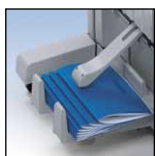
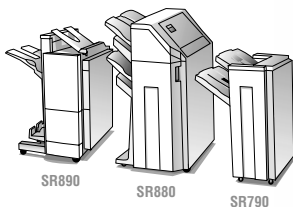
## User Friendly Multi-page Scanning/Copying

For large jobs and documents up to A3, the Aficio™2035e/2045e boast an Auto Reverse Document Feeder (ARDF), capable of scanning/copying up to 80 pages. Also, books and magazines can be copied straight from the platen glass.



## Versatile Finishing Possibilities

For a professional touch to your print/copy output, the Aficio™2035e/2045e can be equipped with a 1,000- or 2,500-sheet finisher (SR790 or SR880). Both finishers offer a variety of finishing possibilities, ranging from stapling only to stapling and punching: ideal for the in house creation of presentation material, reports, folders etc.



## Professional Booklet Creation

With the Aficio™2035e/2045e's professional booklet finisher (SR890), you can easily turn your prints/copies into multiple sets of A5 or A4 booklets. This option automatically saddle stitches the booklet and folds reports, manuals, brochures and catalogues exactly the way you want them.

*The image on these pages is not a real photograph and slight differences in detail might appear.*



### Easy One Click Printing

Ricoh's unique printer language RPCS™ stands for fast, easy and efficient printing. Thanks to its icon based interface, any print job - no matter how complex - is only one click away and entering print commands takes only seconds.



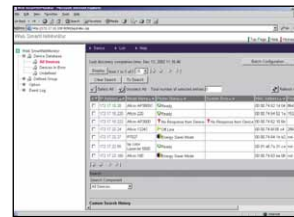
### Confidentiality & Cost Efficiency

The Aficio™2035e/2045e stand for efficient printing. By means of Locked Print™, classified print jobs will only be released after password confirmation. To eliminate errors and avoid unnecessary costs when producing multiple sets, you can use the Sample Print™ function. This allows you to verify the first set before releasing the remaining sets at the operation panel.



### Flexible Scanning

The Aficio™2035e/2045e turn digitising into a user friendly process. Files can be scanned and stored on the document server, sent to any networked PC or even a designated folder. Alternatively, they can be sent by e-mail using for example the direct link to the company's e-mail system address book via LDAP.

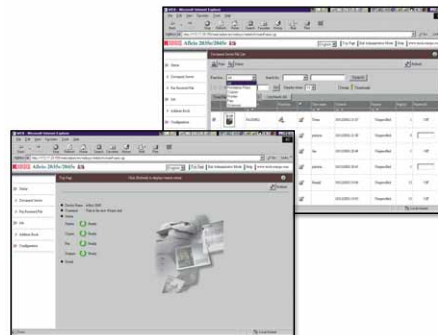


### Advanced Device Monitoring

Using Web SmartDeviceMonitor™, the status of networked peripherals can be monitored and checked through web browsers. Additionally, IT managers and network administrators can set user privileges, obtain complete job statistics and restrict usage.

### Incoming Faxes on your PC

Without an additional server, you can store incoming faxes in the systems' memory. Using Web Image Monitor or DeskTopBinder™ V2 Lite, you can check the receiving fax data from your own PC before printing, downloading or deleting.



### Non Stop Production

With a maximum paper capacity of 3,550 sheets, these systems can effortlessly take care of any large print/copy job. Continuous refills are history.



### Optimal Document Management

For streamlined document handling, you can store all your workgroup's print, copy, fax and scan data in the document server. To manage the variety of information that comes to you daily, use DeskTopBinder™ V2 Lite, a versatile workflow integration software tool that allows you to merge different formats into one file. Stored data can be retrieved, files viewed, re-organised, changed or deleted. With Web Image Monitor this can be done with the greatest ease through a web browser anywhere, anytime.

### Fax Directly from your PC

Via the LAN fax function, you can send fax messages directly from your own networked PC. This saves time and ensures better output quality at the receiving end. To reduce the distribution of printed faxes, faxes can be automatically forwarded by e-mail. You can even receive faxes outside the office, via your laptop.

# High Performance Document Handling

To meet your demands, now and in the future, upgradeable office equipment is essential. The Aficio™2035e/2045e have it all: they are fully customisable and offer a variety of new, exciting benefits. These systems not only connect to any network and make your document distribution efficient, they also allow you to monitor and check the status of your equipment through web browsers.

## Top Productivity

Thanks to the 'scan once, copy many' principle, your originals are scanned only once, stored into memory and reproduced from there. This saves time and gives you high quality output. The Aficio™2035e/2045e also boast a very short warm up time and impressive first output speed thanks to the QSU (quick start up) technology. In addition, duplexing is just as fast as simplex copying.

## Connect to Any Network

The Aficio™2035e/2045e integrate with virtually any network environment. A Network Interface Board (NIB) is embedded in the printer/scanner module. An IEEE 1394 interface board can be added to increase the systems' output speed, whereas the USB2.0 option enhances connectivity flexibility. Wireless LAN enables printing across the network without the need for network cables. Opting for Bluetooth ideally allows you to connect devices outside the network.

## Efficient Distribution

Using the 'scan to e-mail' function, you can send scanned files to any e-mail address in the world without the need for a designated server or extra software. Via LDAP you have direct access to the e-mail address book of

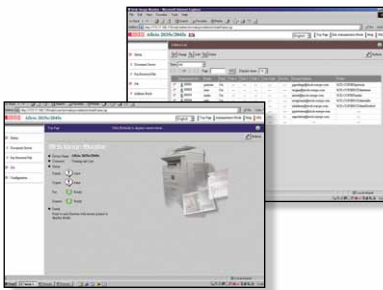
your company's e-mail system. You can also manually update the e-mail address book from the systems' operation panel or from your PC, via Web Image Monitor. To prevent unauthorised users from sending your document, you can rely on the client folder protection function. In addition to 'scan to e-mail', you can distribute larger documents directly from the machine to a client folder on the network by making use of the 'scan to folder' function.

## Cost Saving Internet Faxing

Using the Internet for long distance faxing has major advantages. By sending fax messages to PCs in e-mail format, you reduce your costs while enhancing your communication capabilities and document quality.

## With Regards to the Environment

Equipped with an environmentally conscious toner, the Aficio™2035e/2045e embody Ricoh's commitment to the environment. As less energy is required to produce the toner particles and carbon oxide emissions are minimised, these systems play an active role in environmental protection. What's more, this new type of toner significantly improves image quality.



Using Web Image Monitor you can check the status of a single networked peripheral and monitor the document server as well as paper/toner supply through a common web browser. You can choose to manage the e-mail address book via Web Image Monitor or the operation panel.



The Aficio™2035e/2045e's motto: duplex equals single-sided output. As a result, you can save on paper and reduce the impact on the environment.



To distribute documents in a secure way, simply send files via 'scan to e-mail' straight from the operation panel to the recipient's e-mail address.



# Aficio™ 2035e/2045e

## Specifications



### COPIER

Copying process:	Twin laser beam scanning and electro-photographic printing	
Copy speed:	35/45 copies per minute	
Resolution:	600 dpi	
Multiple copy:	Up to 999	
Warm-up time:	15/20 seconds	
First output speed:	4.5/3.6 seconds	
Zoom:	25 - 400% (in 1% steps)	
Memory:	Standard:	64 MB + 20 GB Hard Disk Drive
	Maximum:	192 MB + 20 GB Hard Disk Drive
Paper input capacity:	Standard:	2 x 500-sheet trays
		50-sheet bypass tray
	Maximum:	3,550 sheets
Paper output capacity:	Standard:	500 sheets (internal tray)
	Maximum:	2,875 sheets
Paper size:	A6 - A3	
Paper weight:	Paper trays:	64 - 105 g/m <sup>2</sup>
	Bypass tray:	52 - 163 g/m <sup>2</sup>
	Duplex tray:	64 - 105 g/m <sup>2</sup>
Duplexing:	Standard	
Dimensions (W x D x H):	670 x 650 x 720 mm	
Weight:	Less than 79 kg	
Power source:	220 - 240 V, 50/60 Hz	
Power consumption:	Less than 1.5 kW	

### PRINTER/SCANNER (option)



### Printer

Print speed:	35/45 prints per minute	
Printer language/resolution:	Standard:	
	PCL5e:	300/600 dpi
	PCL6:	600 dpi
	RPCS™:	200/300/600 dpi
	Option:	
	Adobe® PostScript® 3™:	600 dpi
Interface:	Standard:	Bi-directional IEEE 1284
		Ethernet 10 base-T/100 base-TX
	Option:	Wireless LAN (IEEE 802.11b)
		IEEE 1394
		USB2.0
		Bluetooth
Memory:	192 MB + 20 GB Hard Disk Drive	
Network protocol:	TCP/IP, IPX/SPX, NetBEUI, AppleTalk	
Supported networks:	Windows® 95/98/Me/NT4.0/2000/XP 2003 Server	
	Macintosh 8.6 or later (except for v10.0.x)	
	IBM iSeries	
	AS/400® using OS/400 Host Print Transform	



### Scanner

Scan speed:	Maximum 52 originals per minute (MH, A4)
Resolution:	Maximum 600 dpi (TWAIN: 1,200 dpi)
Original size:	A5 - A3
Output formats:	PDF/JPEG/TIFF
Bundled drivers:	Network TWAIN
Scan to e-mail:	SMTP
Destination addresses:	Maximum 500 for 1 single operation
Stored destination addresses:	Maximum 2,000
Address book:	Via LDAP
Scan to folder:	SMB or FTP protocol (with login security)
Destination:	Maximum 50 folders per job



### SOFTWARE

SmartDeviceMonitor™, Web SmartDeviceMonitor™  
Web Image Monitor, DeskTopBinder™ V2 Lite<sup>1</sup>  
ScanRouter™ V2 Lite<sup>1</sup>



### FAX (option)

Circuit:	PSTN, PBX	
Compatibility:	ITU-T (CCITT) G3, additional G3	
	ITU-T (T.37) Internet Fax	
Modem speed:	Maximum 33.6 Kbps	
Resolution:	Standard/detail:	200 x 200/100 dpi
	Maximum:	400 x 400 dpi (option)
Compression method:	MH, MR, MMR, JBIG (option)	
Scanning speed:	Less than 0.43 seconds (200 x 100 dpi, A4)	
Memory capacity:	Standard:	8 MB
	Maximum:	8 MB + 8 MB (option)
Memory backup:	Yes	

### OTHER OPTIONS

- Platen cover
- 80-sheet Auto Reverse Document Feeder
- 2 x 500-sheet paper trays
- 125-sheet one-bin tray
- 1,500-sheet large capacity tray
- 1,000-sheet finisher (3 position stapling)
- 2,500-sheet multi-tray finisher (4 position stapling)
- 1,150-sheet booklet finisher (4 position stapling)
- Punch unit
- Adobe® PostScript® 3™ (600 dpi)
- Wireless LAN (IEEE 802.11b)
- IEEE 1394
- USB2.0
- Bluetooth
- 2<sup>nd</sup> Super G3 port
- NV RAM
- Professional software solutions

<sup>1</sup> Bundled with printer/scanner option.

For further details and availability of models, optional apparatus and software, please consult your local Ricoh supplier.



ISO9001: 2000 certified  
ISO14001 certified

Ricoh has determined that this product meets the ENERGY STAR guidelines for energy efficiency.

Ricoh believes in conserving the earth's precious natural resources.

All brand and/or product names are trademarks of their respective owners.

Specifications and external appearance are subject to change without notice. The colour of the actual product may vary from the colour shown in the brochure.

**RICOH**  
Image Communication

For more information, please contact:

RICOH EUROPE B.V. Groenelaan 3,  
P.O. Box 114, 1180 AC Amstelveen,  
The Netherlands.  
Phone: +31 (0)20-5474111  
Fax: +31 (0)20-6418601

[www.ricoh-europe.com](http://www.ricoh-europe.com)